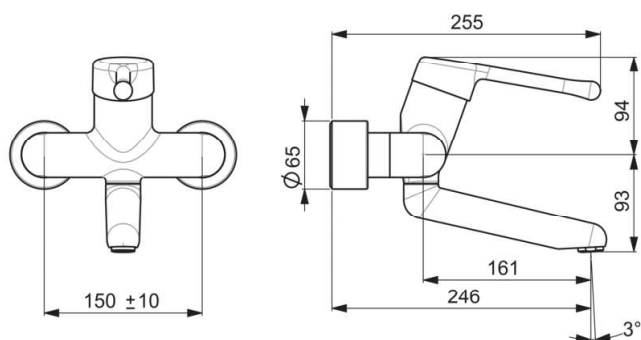


# Medipro

Hansa Medipro Exposed Accessible Sink Faucet 161mm  
Spout - Long Lever Bulb

Code:  
HMED0255 2206



- Chrome
- Health & Care
- Single-lever, Swivel spout, Lockable in the middle position, Long shape
- Laminar stream
- Hot & Cold Symbols
- Limitation option for maximum temperature and flow-rate, Adjustable hot water stop (included, retrofittable)
- ø 48 mm ceramic cartridge for flow and temperature control
- Eccentric coupling(s), Cover plate(s), with integrated shut-off valve(s), Cover plate triple sealed
- Inner body made of DZR brass, Surfaces in contact with drinking water contain less than 0.3% lead, Waterways without nickel coating

Flow Rate at 300kPa	12.0 L/min
Hot Water Supply	max. +90°C
Working Pressure	0.5 - 10 bar
Installation Width	cc150 ± 10 mm



DESIGNED AND ENGINEERED IN GERMANY

MANUFACTURED IN EUROPE

