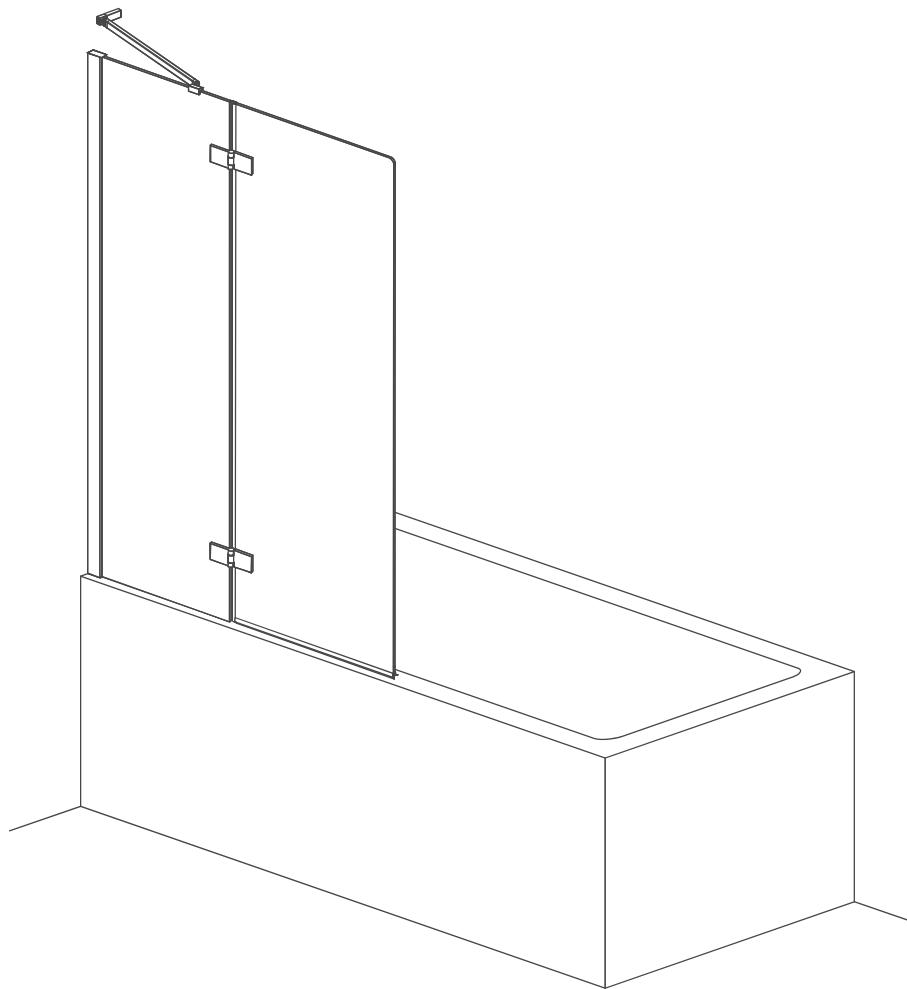




Hinged Bath Screen

Installation Guide



General Information:

Please inspect the product immediately upon receipt for transit damage, missing parts or manufacturing fault. Damage reported later cannot be accepted.

Please handle the product with care avoiding knocks and shock loading to all sides and edges of the glass.

Note: Safety glass can not be re-worked.

Please read these instructions carefully before the start of the installation.

Special care should be taken when drilling walls to avoid hidden pipes or electrical cables.

Note: This product is heavy and may require two people to install.

Aftercare Instructions:

After use, your shower should be cleaned with soap and water. This is particularly important in hard water districts where the insoluble lime salts may be deposited and allowed to build up.

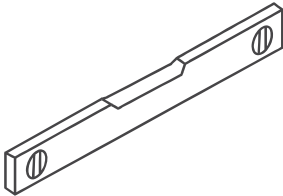
Cleaners of a gritty or abrasive nature should not be used. Care should be taken to avoid contact with strong chemicals such as organic solvents and strippers.

Glass cleaners can be used but with caution, if in doubt contact the manufacturer of the cleaner in question.

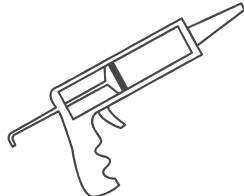
Please keep these instructions for aftercare and customer service details.

Tools Required:

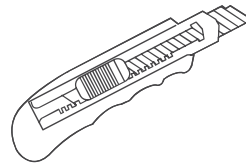
Level



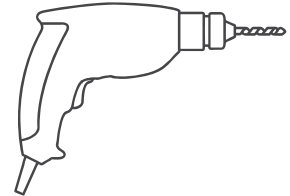
Caulking Gun



Craft Knife



Drill



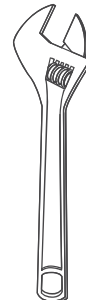
Flat Head
Screw Driver



Phillips Head
Screw Driver



Adjustable
Crescent Wrench



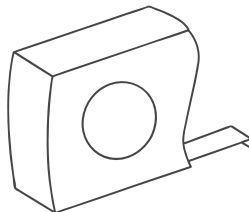
Drill Bits
3mm & 6mm



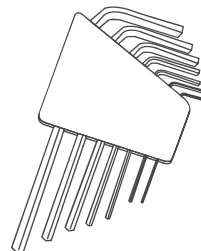
Hammer



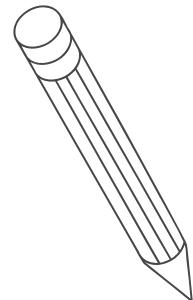
Measuring
Tape









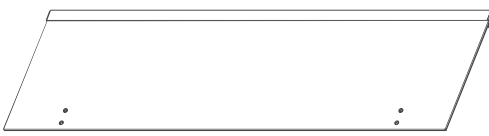


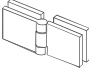



Hexagonal
Key Set



Pencil



Box Contents:

1	1 x Post		
2	1 x Vertical Seal		
3	1 x Horizontal Seal		
4	1 x Fixed Panel		
5	1 x Swinging Panel		
6	1 x Fixing Bar		
7	2 x Hinges		
8	3 x Wall Plugs		
9			
10	3 x Screw Caps		

Products Continued on the Next Page

Note: This product is heavy and may require two people to install.

Box Contents Continued:

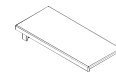
11 3 x Washers



12 3 x Screws ST4x10



13 1 x Profile Cap - Post



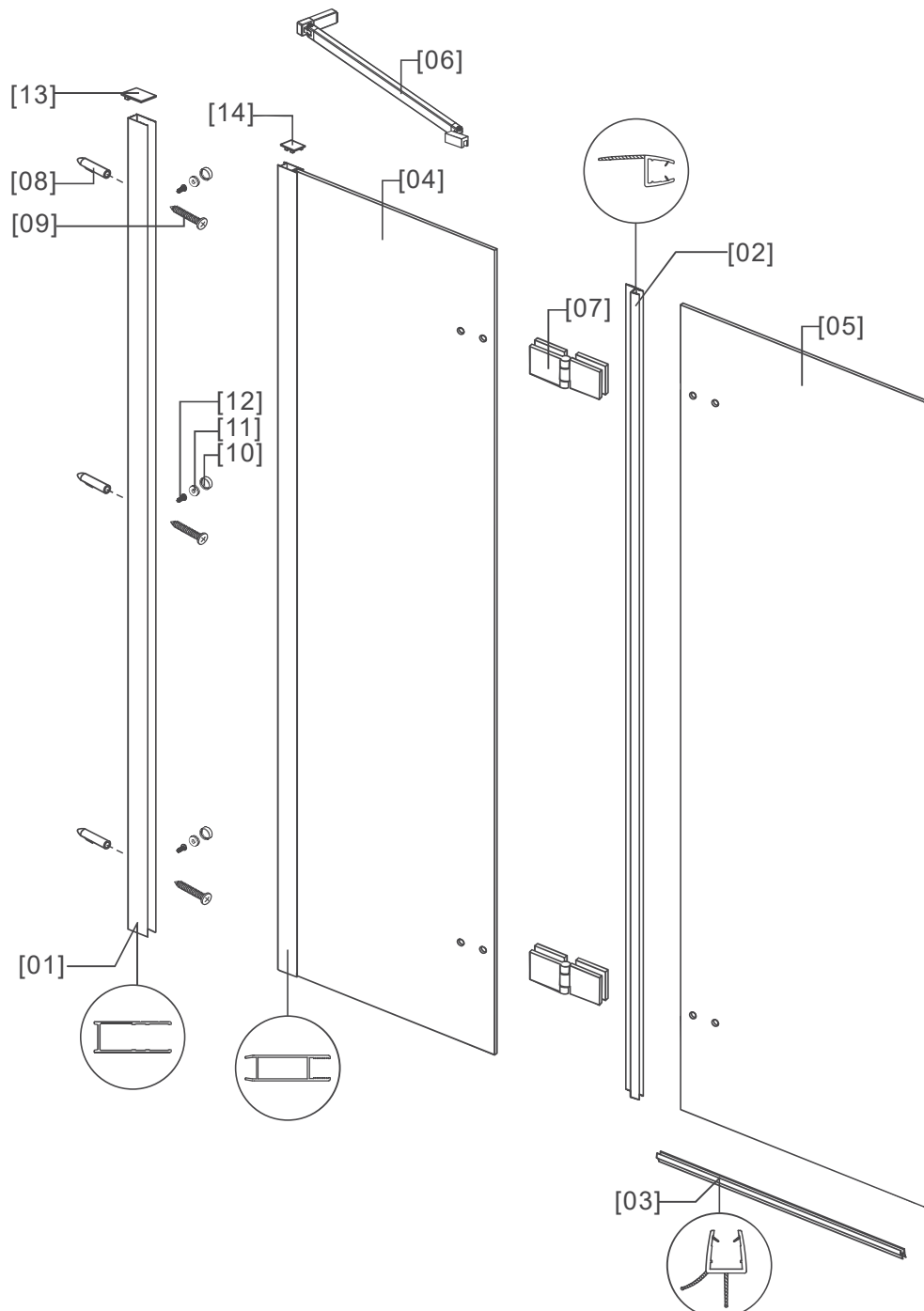
13 1 x Profile Cap - Fixed Panel



Note: This product is heavy and may require two people to install.

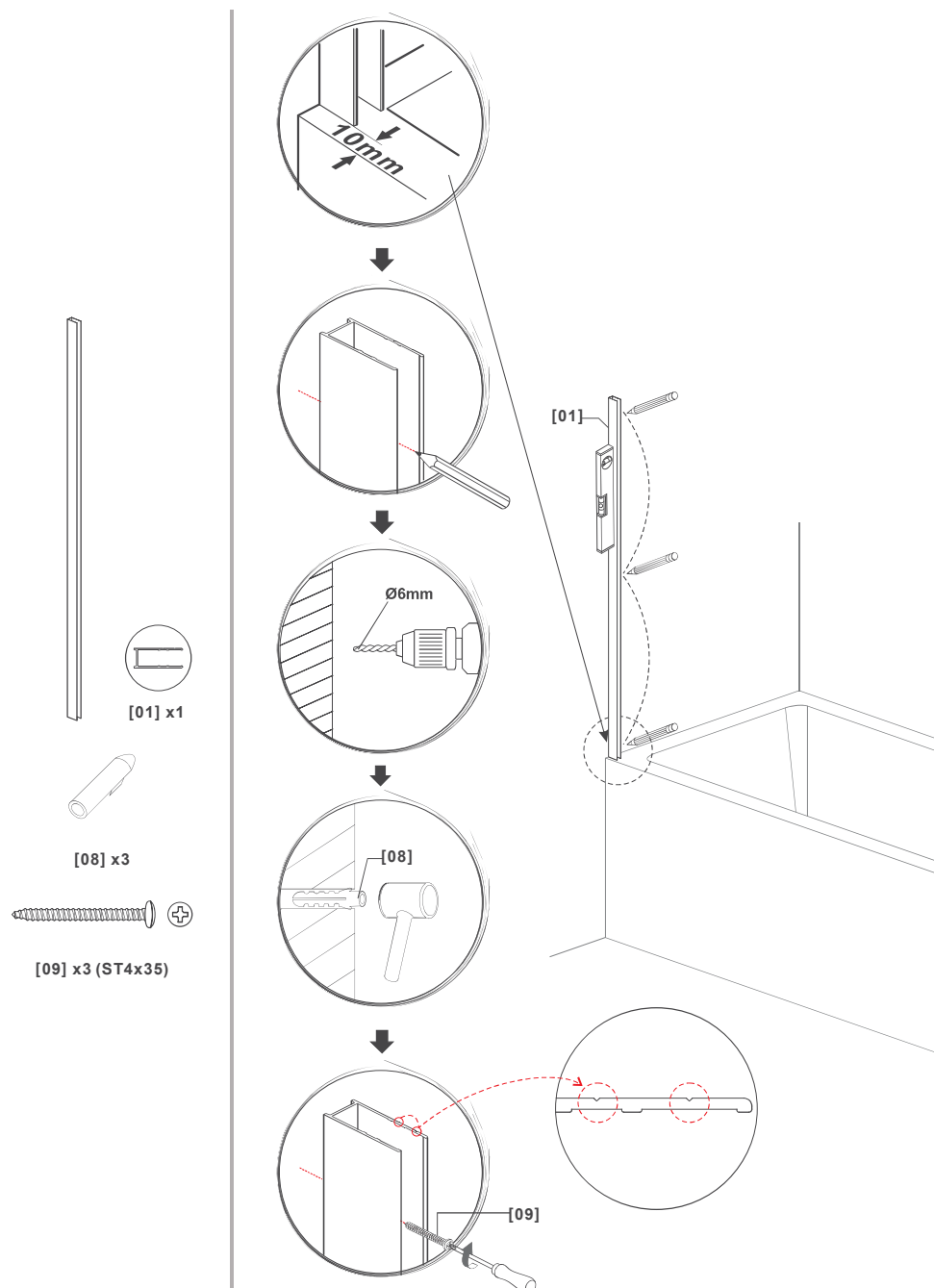
View Assembly Drawing on the Next Page

Assembly Drawing:



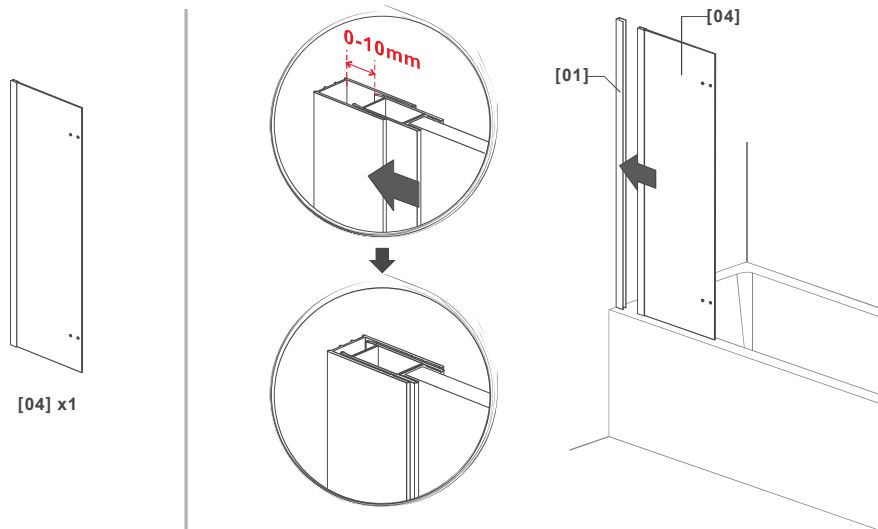
Assembly Drawing:

Step One

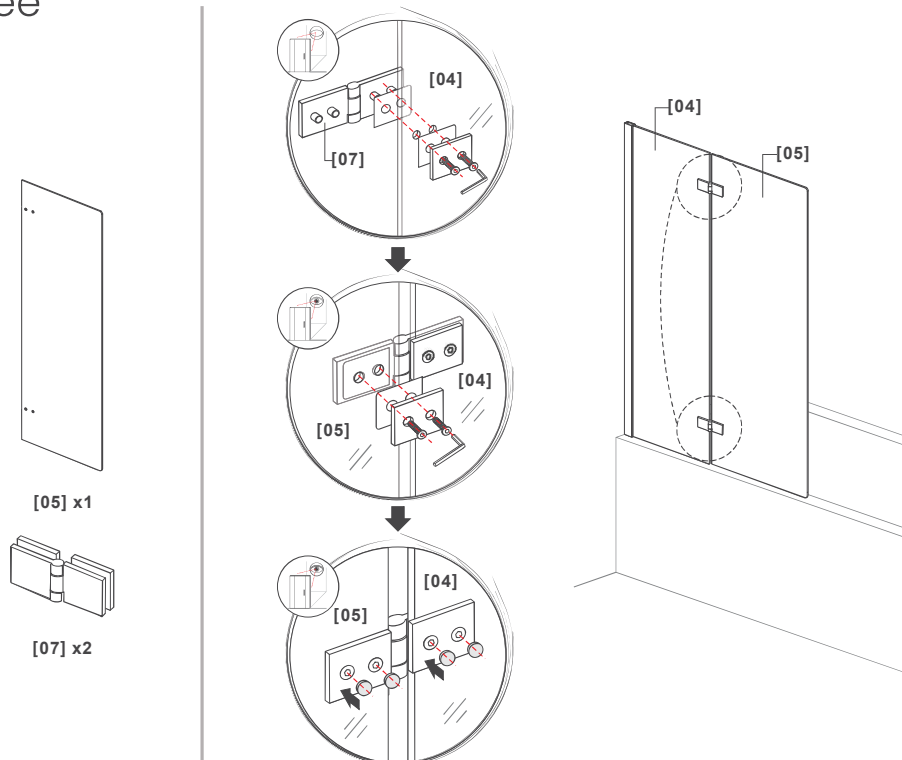


Assembly Drawing:

Step Two

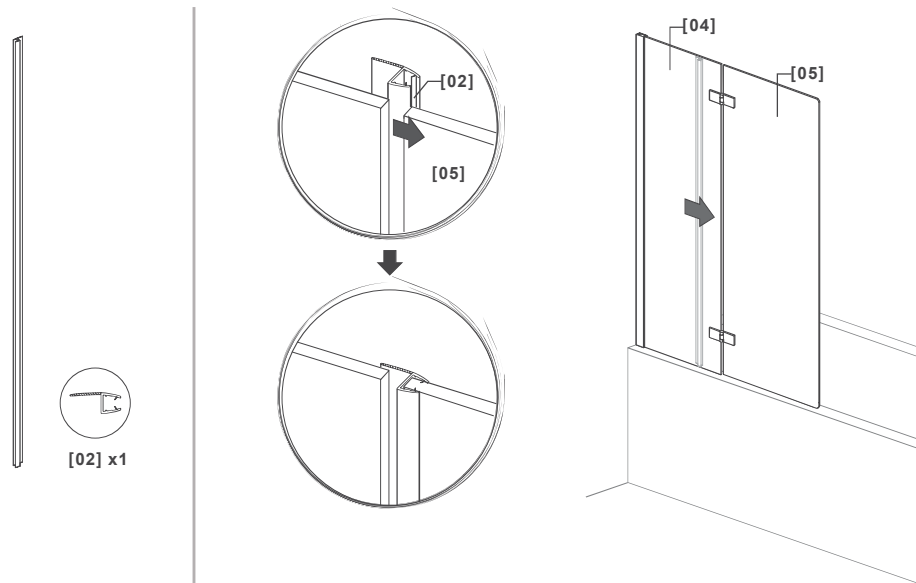


Step Three

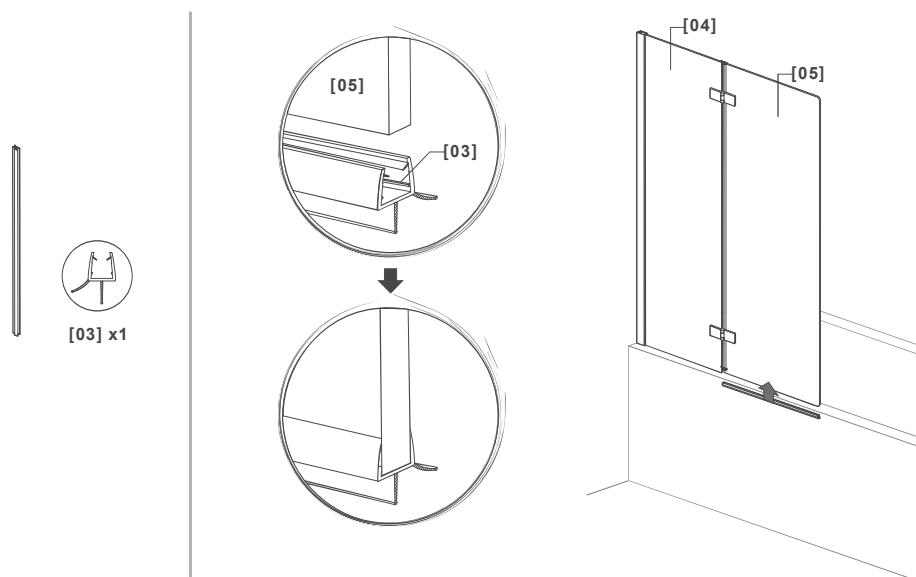


Assembly Drawing:

Step Four

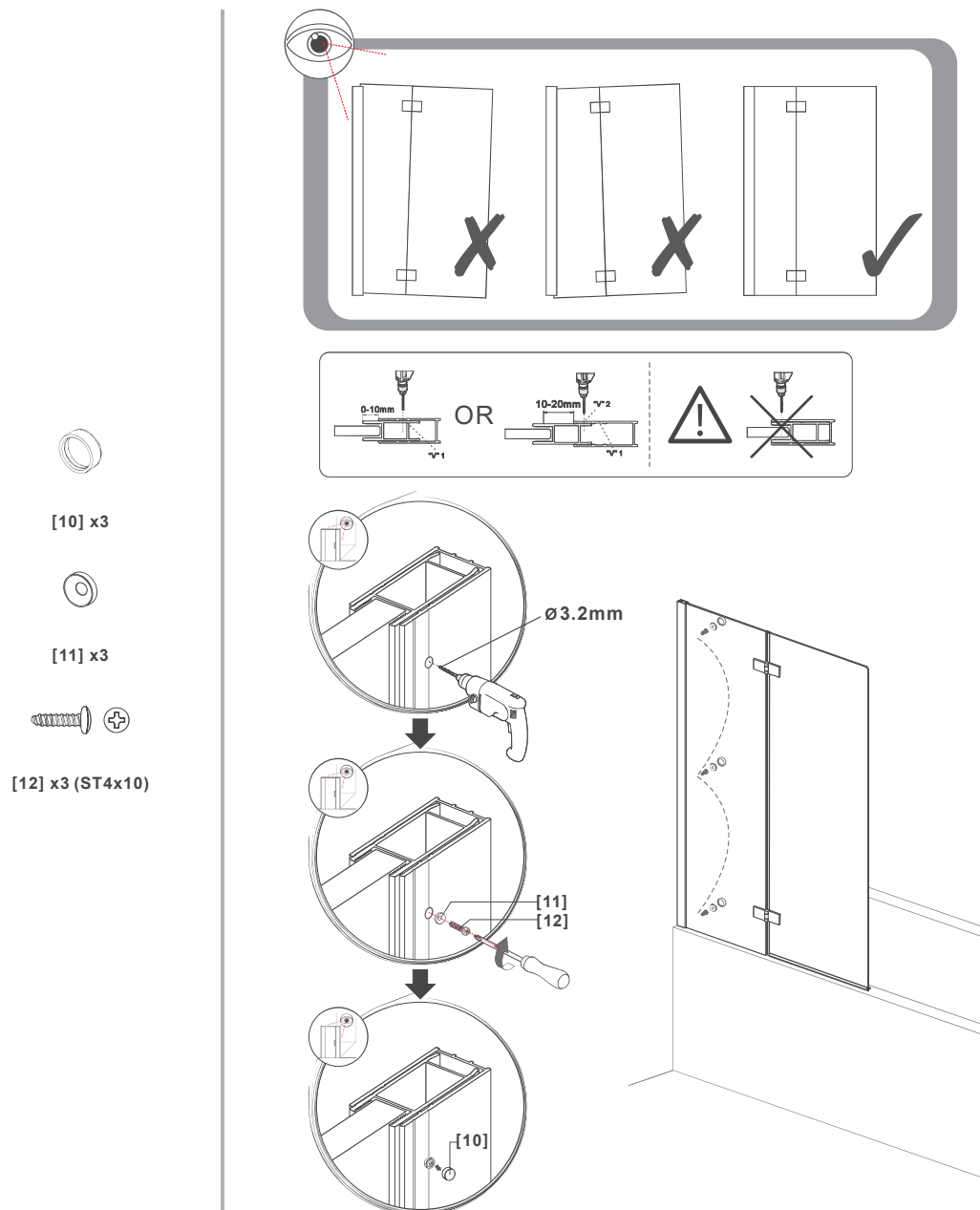


Step Five



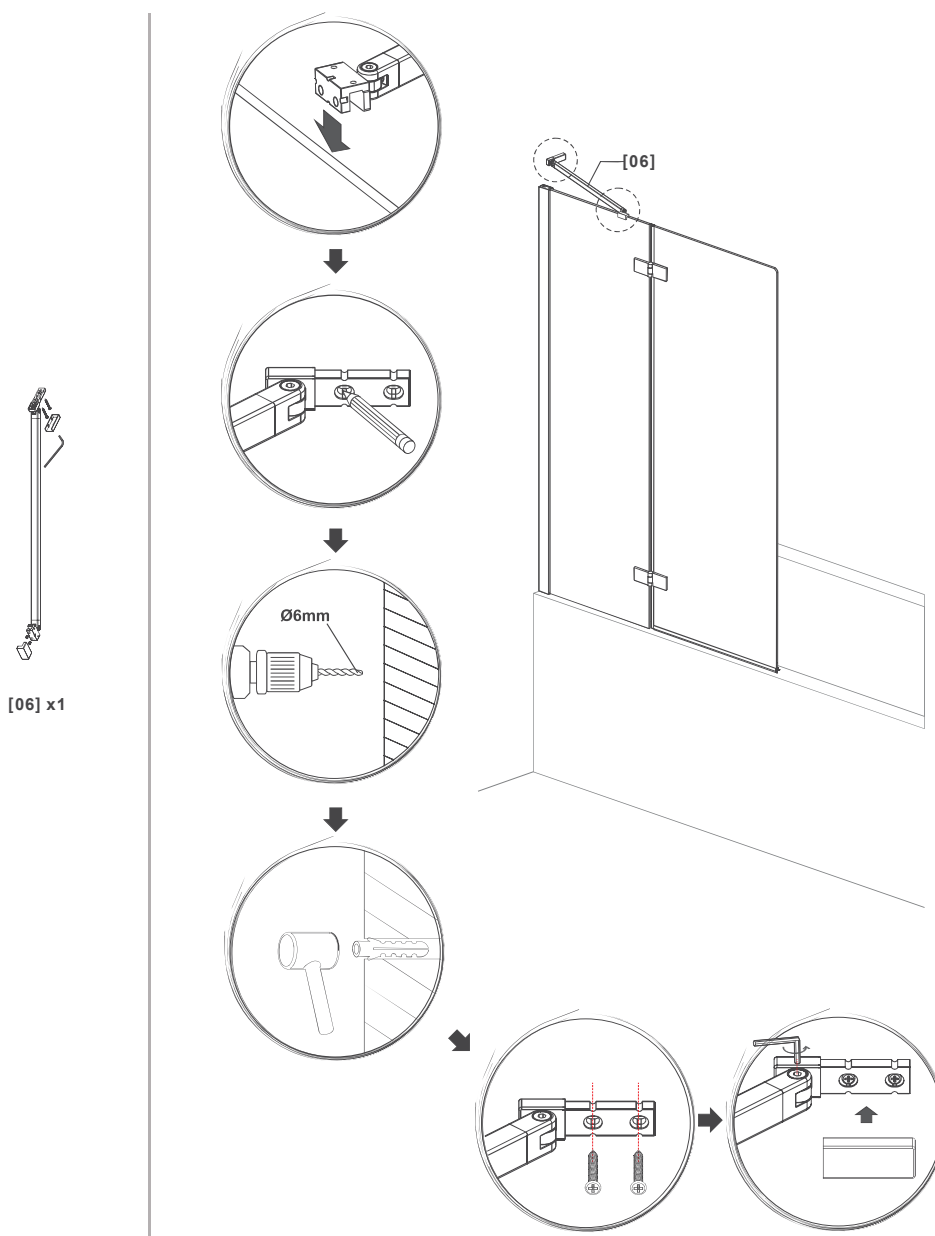
Assembly Drawing:

Step Six



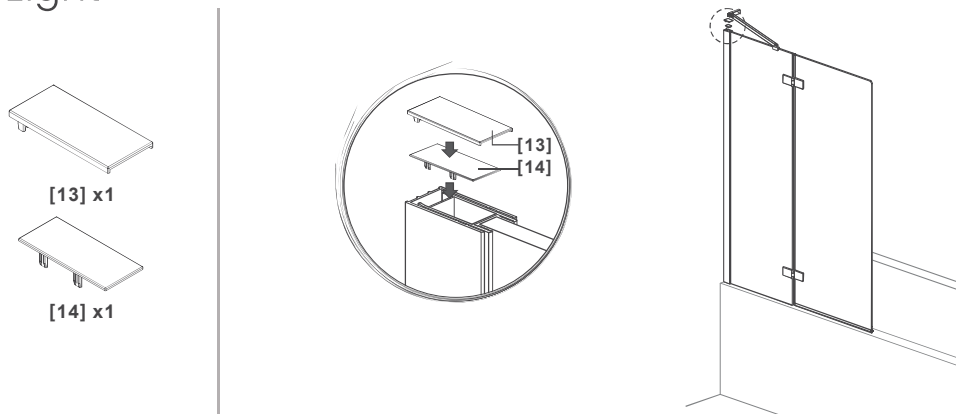
Assembly Drawing:

Step Seven



Assembly Drawing:

Step Eight



Step Nine

